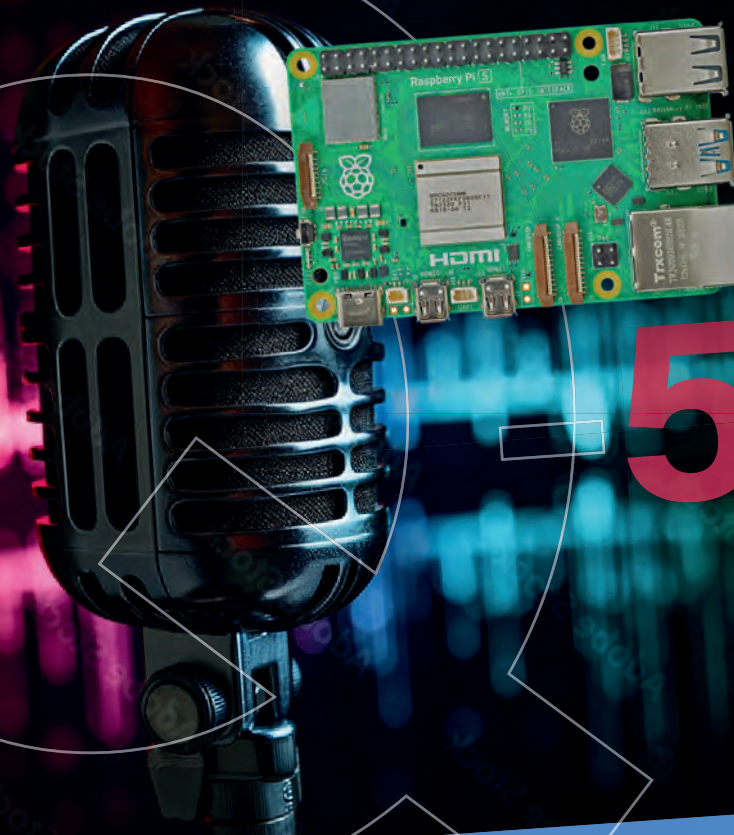


Raspberry Pi 5 for Radio Amateurs

Program and Build Raspberry Pi 5 Based
Ham Station Utilities with the RTL-SDR

GQRX
SDR++
CubicSDR
RTL-SDR Server
Dump1090
FLDIGI
RTL_433
TWCLOCK
Morse2Ascii
PyQSO
Python!
Welle.io
qsstv



5

Dogan Ibrahim
Ahmet Ibrahim

Raspberry Pi 5 for Radio Amateurs

Program and Build Raspberry Pi 5 Based
Ham Station Utilities with the RTL-SDR



Dogan Ibrahim, G7SCU
Ahmet Ibrahim, 2E1GUC

● This is an Elektor Publication. Elektor is the media brand of Elektor International Media B.V.
PO Box 11, NL-6114-ZG Susteren, The Netherlands
Phone: +31 46 4389444

● All rights reserved. No part of this book may be reproduced in any material form, including photocopying, or storing in any medium by electronic means and whether or not transiently or incidentally to some other use of this publication, without the written permission of the copyright holder except in accordance with the provisions of the Copyright Designs and Patents Act 1988 or under the terms of a licence issued by the Copyright Licensing Agency Ltd., 90 Tottenham Court Road, London, England W1P 9HE. Applications for the copyright holder's permission to reproduce any part of the publication should be addressed to the publishers.

● **Declaration**

The authors and publisher have used their best efforts in ensuring the correctness of the information contained in this book. They do not assume, or hereby disclaim, any liability to any party for any loss or damage caused by errors or omissions in this book, whether such errors or omissions result from negligence, accident or any other cause.

● British Library Cataloguing in Publication Data
A catalogue record for this book is available from the British Library

● **ISBN 978-3-89576-612-1** Print
ISBN 978-3-89576-613-8 eBook

● © Copyright 2024 Elektor International Media
www.elektor.com
Editor: Jan Buiting, MA
Prepress Production: D-Vision, Julian van den Berg
Printers: Ipskamp, Enschede, The Netherlands

Elektor is the world's leading source of essential technical information and electronics products for pro engineers, electronics designers, and the companies seeking to engage them. Each day, our international team develops and delivers high-quality content - via a variety of media channels (including magazines, video, digital media, and social media) in several languages - relating to electronics design and DIY electronics. www.elektormagazine.com

Contents

Preface	12
Chapter 1 • Installing the Raspberry Pi 5 Operating System	14
1.1 Overview	14
1.2 Using a pre-installed micro SD card	15
1.3 Larger font in Console mode	16
1.4 Accessing your Raspberry Pi 5 Console from your PC – the Putty Program	18
1.5 Accessing the Desktop GUI from your PC	21
1.6 Assigning a Static IP Address to your Raspberry Pi 5	23
1.7 Enabling Bluetooth.	24
1.8 Connecting the Raspberry Pi 5 to a Wired Network	24
1.8.1 Unable to connect to a wired network.	25
1.9 Installing the Raspberry Pi 5 Bookworm Operating System on a Blank microSD Card	26
Chapter 2 • Using a Text editor, Creating and Running a Python Program	29
2.1 The nano Text Editor	29
2.2 Creating and Running a Python Program	34
2.2.1 Method 1 — Interactively from command prompt in Console mode	34
2.3 Which method?	36
Chapter 3 • Amateur Radio Programs – Software-Only	38
3.1 Overview	38
3.2 4-Band Resistor Color Code Identifier.	38
3.3 4-Band Resistor Color Code Identifier Including Very Small Resistors.	40
3.4 Series or Parallel Resistors	42
3.5 Capacitor Identification	44
3.6 Capacitors in Series or in Parallel.	46
3.7 Resistive Potential Divider.	48
3.8 Resistive Attenuator Design	51
3.9 RC Charging Transient Circuit Response	53
3.10 Calculating the Inductance of a Single-Layer, Air-Core Coil	56
3.11 Constructing a single layer coil for required inductance	57

- 3.12 Calculating the Capacitance for Required Resonance Frequency 58
- 3.13 DC Circuits Mesh Analysis 60
 - 3.13.1 DC Circuits mesh analysis — a more complex example 62
- 3.14 DC Circuit Node Analysis. 63
- 3.15 Bipolar Junction Transistor Analysis 66
- 3.16 Designing Active Low-Pass Filters 69
- 3.17 Passive Low-Pass Butterworth Filter Design. 74
- 3.18 The 555 Timer IC. 77
- 3.19 Impedance Matching 80
- 3.20 Designing a Common-Emitter BJT Transistor Amplifier Circuit 83
- 3.21 Using a Windows-Based Simulation Program. 88
 - 3.21.1 Simulating the Resistive Mesh Circuit in Figure 3.33. 89
 - 3.21.2 Simulating the transistor circuit in Figure 3.42. 90
 - 3.21.3 Simulating the transistor circuit in Figure 3.66. 92
- Chapter 4 • Hardware Based Projects for Amateur Radio 95**
 - 4.1 Overview 95
 - 4.2 Project 1: Logic Probe 95
 - 4.3 Project 2: Station Mains On-Off Power Control 98
 - 4.4 Project 3: Station Clock with Output to the Monitor 103
 - 4.5 Project 4: Station Clock with Output to LCD 105
 - 4.6 Project 5: Station Geographical Coordinates. 112
 - 4.7 Project 6: Waveform Generation in Software — Sawtooth waveform 120
 - 4.7.1 The MCP4921 DAC 120
 - 4.8 Project 7: Generating a Waveform – Frequency Entry using Keypad and LCD 126
 - 4.8.1 The AD9850 127
 - 4.8.2 Starting the program automatically at boot time 139
 - 4.8.3 Boxing the project 139
 - 4.9 Project 8: Morse Code Exerciser with Rotary Encoder and LCD to Set wpm Value . 140
 - 4.9.1 Rotary encoder 142
 - 4.9.2 Boxing the project 148
 - 4.10 Project 9: Morse Decoder 149

4.11 Project 10: Frequency Counter	161
4.12 Project 11: FM Radio with Raspberry Pi 5	167
4.13 Project 12: Modified Project — Increasing the Output Signal Level – Connecting a Loudspeaker	175
4.14 Project 13: FM Radio using an LCD and Rotary Encoder to Set the Frequency . . .	177
Chapter 5 • Raspberry Pi 5 Audio Output.	184
5.1 Overview	184
5.2 Using an External USB Audio Adapter	184
5.3 Testing the Audio Output	184
5.4 Audio Volume	185
Chapter 6 • RTL-SDR Meets Raspberry Pi 5	188
6.1 Overview	188
6.2 RTL-SDR V3	189
6.3 RTL-SDR V4 vs V3	190
6.4 The RTL-SDR Antenna Kit	192
6.4.1. Dipole orientation	193
6.4.2. Terrestrial signal reception	194
6.4.3. Satellite reception	194
6.4.4. Choosing the antenna element length	194
6.5 Hardware Setup	195
6.6 Installing the RTL-SDR Software on Raspberry Pi 5	195
6.7 Testing — Tuning to a Frequency Manually	197
6.8 Testing the RTL-SDR Dongle	198
Chapter 7 • A Simple FM Receiver	199
7.1 Overview	199
7.2 The Program	199
7.2.1 Creating a shell script	200
Chapter 8 • GQRX on the Raspberry Pi 5	201
8.1 Overview	201
8.2 Installation on Raspberry Pi 5	201
8.3 Using the GQRX	201
8.3.1 The audio frame	207

- 8.3.2 Streaming audio to your PC 208
- Chapter 9 • SDR++ 210**
- 9.1 Overview 210
- 9.2 Installing SDR++ on the Raspberry Pi 5 210
- 9.3 Using the SDR++ 211
 - 9.3.1 Quick startup example 211
 - 9.3.2 Graphical outputs 215
 - 9.3.3 Source options 216
 - 9.3.4 Display options 217
 - 9.3.5 Radio module 218
 - 9.3.6 Frequency Manager 219
 - 9.3.7 Recorder 219
- Chapter 10 • CubicSDR 220**
- 10.1 Introduction to CubicSDR 220
- 10.2 Quick Startup 220
- Chapter 11 • RTL-SDR Server 223**
- 11.1 Overview 223
- Chapter 12 • Dump1090 226**
- 12.1 Overview 226
- 12.2 Dump1090 Essential Features 226
- 12.3 Installing Dump1090 on the Raspberry Pi 5 226
- 12.4 Launching the Dump1090 Software 227
- Chapter 13 • FLDIGI 229**
- 13.1 Overview 229
- 13.2 Features 229
- 13.3 Digital Formats 229
- 13.4 Installation on Raspberry Pi 5 230
- 13.5 Starting the Program 231
- 13.6 Decoding Morse Code (CW) 232
- 13.7 Receiving Weather Fax (WEFAX) 233
- 13.8 Receiving RTTY Traffic 238

13.8.1 Using fldigi to receive RTTY messages.	239
13.9 Receiving NAVTEX Messages	239
13.9.1 Using fldigi to receive NAVTEX messages	240
Chapter 14 • Quisk	242
14.1 Overview	242
14.2 Installing quisk on the Raspberry Pi 5	242
Chapter 15 • RTL_433	244
15.1 Overview	244
15.2 Installing RTL_433 on the Raspberry Pi 5	244
15.3 Program Options	245
Chapter 16 • Other SDR hardware	246
16.1 Overview	246
16.2 HackRF One	246
16.3 NooElec NESDR Smart HF Bundle	247
16.4 BladeRF	248
16.5 LimeSDR.	249
16.6 Universal Software Radio Peripheral (USRP)	250
16.7 ADALM-Pluto	250
16.8 AirSpy HF+ Discovery	251
Chapter 17 • Installation and Use of Some Popular Radio Applications	252
17.1 Overview	252
17.2 Aldo Morse Code Tutor – Text Based	252
17.2.1 Installing aldo on the Raspberry Pi 5	252
17.3 xcwcp Morse Code Tutor — Graphical	252
17.3.1 Installing xcwcp on Raspberry Pi 5	252
17.4 GPredict — Satellite/Orbital Object Tracking and Rig Control	253
17.4.1 Installing GPredict on Raspberry Pi 5	253
17.4.2 GPredict controls	254
17.5 TWCLOCK	262
17.5.1 Installation on Raspberry Pi 5	262
17.5.2 Using the program	262

- 17.6 CQRLOG 265
 - 17.6.1 Installation on Raspberry Pi 5 265
 - 17.6.2 Running the program 265
- 17.7 Klog 266
 - 17.7.1 Installation on Raspberry Pi 5 266
 - 17.7.2 Using the program 266
- 17.8 Morse2Ascii. 268
 - 17.8.1 Installation on Raspberry Pi 5 268
 - 17.8.2 Using the program 268
- 17.9 PyQSO 269
 - 17.9.1 Installation on Raspberry Pi 5 269
 - 17.9.2 Using the program 270
- 17.10 Welle.io (DAB/DAB+ Radio). 271
 - 17.10.1 Installation on Raspberry Pi 5 272
 - 17.10.2 Running the program 272
- 17.11 Ham Clock 273
 - 17.11.1 Installation on Raspberry Pi 5 273
 - 17.11.2 Running the program 274
 - 17.11.3 Accessing from a web browser. 276
- 17.12 Chirp 277
 - 17.12.1 Installation on Raspberry Pi 5 277
 - 17.12.2 Running the program 277
- 17.13 Xastir 278
 - 17.13.1 Installation on Raspberry Pi 5 279
 - 17.13.2 Running the program and configuring for internet APRS 279
- 17.14 QSSTV 282
 - 17.14.1 Installation on Raspberry Pi 5 283
 - 17.14.2 Running the program 283
 - 17.14.3 Testing the program 284
- 17.15 FLRIG 285
 - 17.15.1 Installation on Raspberry Pi 5 286

17.15.2 Running flrig	286
17.16 XyGrib	288
17.16.1 Installation of XyGrib on Raspberry Pi 5	288
1 7.16.2 Running XyGrib	289
17.17 FreeDV	291
17.17.1 Installation on Raspberry Pi 5	292
17.7.2 Running FreeDV	292
17.18 Qtel (EchoLink)	293
17.18.1 Qtel installation on Raspberry Pi	293
17.18.2 Running the program	293
17.18.3 Using EchoLink on smart phones	294
17.19 XDX (DX-Cluster)	297
17.19.1 Installation on Raspberry Pi 5	297
17.19.2 Running the program	297
17.20 WSJT-X	298
17.20.1 Installation on Raspberry Pi 5	298
17.20.2 Running the program	298
Index	300