

1
2
3
4

Ruhestellung
Schaltpunkt
zul. Endstellung

≤22.1
20.8±0.5
19.5
10.3±0.1

21±0.4
16±1
20.6±0.4
(3.75)
∅5±0.2

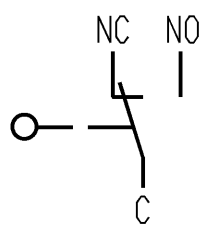
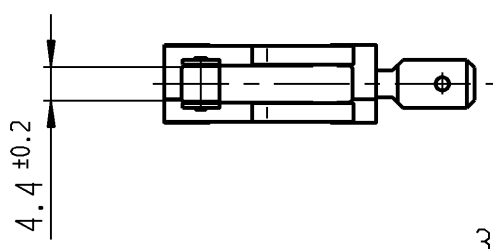
10.3±0.25

8.7±0.8

2.85±0.2
16.6±0.4
(14.85)

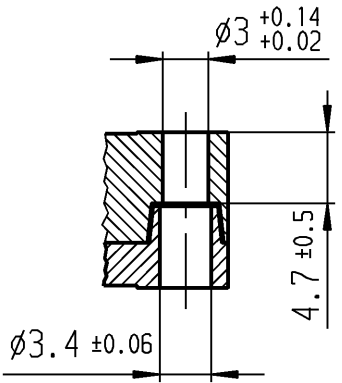
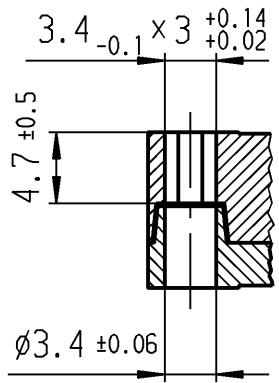
22.2±0.1
28±0.4

Flachstecker 6,3 x 0,8
EN 61058 / EN 61210 / DIN 46244






A-A
2:1

B-B
2:1



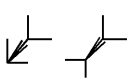

Aufschrift

Ⓜ
1006 μ T100
10(4) /400~10E3
6(2.5) /400~50E3 
10A 125V AC 1/4HP
10A 250V AC 1/4HP
R44  

Wechsler 1-polig

Schalt-Betätigungskraft 1.5 bis 2.5 N
Differenzweg ≤ 0.3 mm

Diese Unterlage ist geistiges Eigentum der Marquardt GmbH. Schutzvermerk nach DIN 34 beachten. Copyright reserved.

Für Form und Lage FOR SHAPE AND LOC.	☉ ≡		Allgemeintoleranzen UNTOLERANCED DIMENSIONS				Pause COPY	Blatt SHEET		Typ K	Zeichn./DRAWING NO. 1006.1201	Index c
	PROJECTION		Abmasse und Nennmassbereiche Angaben in mm	Laenghen LENGTH	Radien RADII	Original DIN		Maßstab SCALE				
Für Winkel FOR ANGLE ± 2°			ALL DIMENSIONS ARE IN MILLIMETRES	0-6 ± 0.1	± 0.2	A4	1:1	Schnappschalter				
c	26264	02.09.99	pfu	g								
b	25628	04.12.97	gc	f				gez./DRAWN BY 03.12.97		gc		
a	22549	24.11.93	gue	e				gepr./CHECKED BY				
Ausg. ISSUE	Änderung REVISION	gez. DRAWN BY	Ausg. ISSUE	Änderung REVISION	gez. DRAWN BY	Ersatz für/REPLACEMENT OF Z.gL.Nr.vom 18.11.86		 Marquardt GmbH, D-78604 Rietheim-Weilheim				